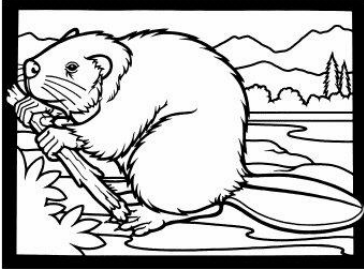


tamakwa

beaver



ta-ma-kwa

tree cutter

tamakwa

beaver dam

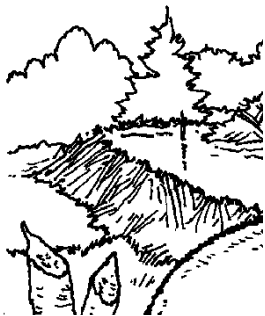
kebenigan

ta-ma-kwa

ke-be-ni-gan

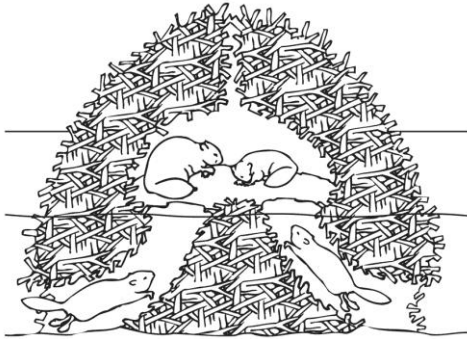
it is to be shut by

tree cutter



adalamiskwid

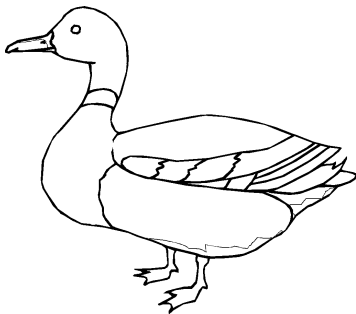
beaver lodge



a-da-la-mis-kwid  
where the beaver  
live

kwigwigen

duck

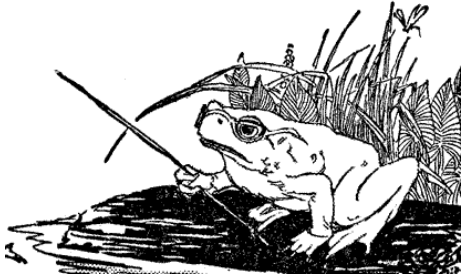


kwi-gwi-gen

duck

chegwal

frog

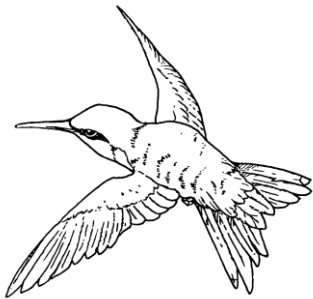


che-gwal

frog

nanatasiz

hummingbird



nana-tas-iz

hummingbird

odamôgan

wajawas



dragonfly

o-da-mô-gan

wa-ja-was

fly that looks like a  
pipe

nebasis



pond

ne-be-sis

little lake

bamagwaag



pond lily

ba-ma-gwaag

a dancing one

azônaskol

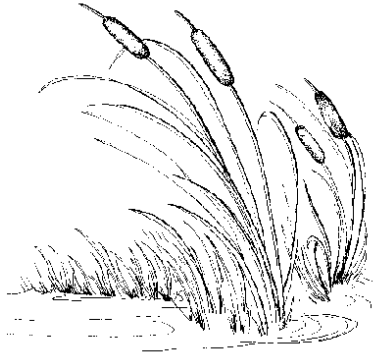


reed

a-zô-nask-ol

leafy growths

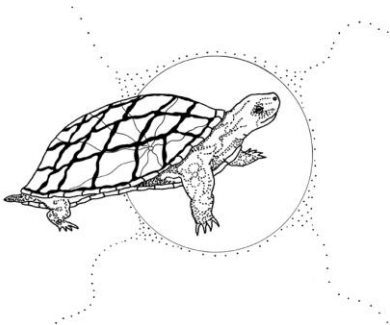
pakwaasko



cattail

pa-kwaa-sko  
a plant related to  
the arrow plant

tolba



turtle

tol-ba

turtle

gasko



heron

gas-ko

heron

wigwaol

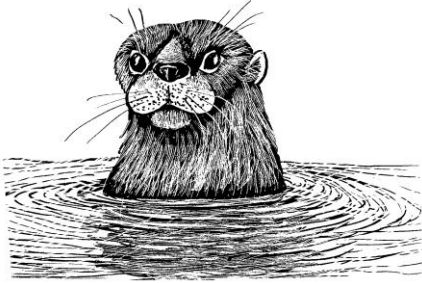


canoe

wi-gwa-ol

birch bark canoe

onegigo



otter

o-ne-gi-go

otter

abagijiman nspiwi  
mezid odahôganal



pedal boat

a-ba-gi-ji-man

n-spi-wi me-zid

o-da-hô-gan-al

flat bottom boat with  
foot paddles

soglônihla

swallow



so-glôn-i-hla

rain bird